



# A-300

300' / 90 m

## BENEFITS

- "Up and over" access
- Unique "under and up" and "up and over and back" access
- Smooth controlled motions to move close to and around glass and fragile structures
- High pressure air line, heater, A/C, halogen lights inside the cage
- Movable cage controls panel with graphic display
- Secondary controls station at a turntable
- Rain cover, sunshade, hoist, winch

## SAFETY

### Intelligent Safety

- Load-dependent built-in cage boom extension limits
- Redundant real-time, computer-limited extension and load limits
- Emergency lowering of the cage to the ground
- Load moment limiter
- Cage overload alarm
- Built-in wind meter

### Physical Safety

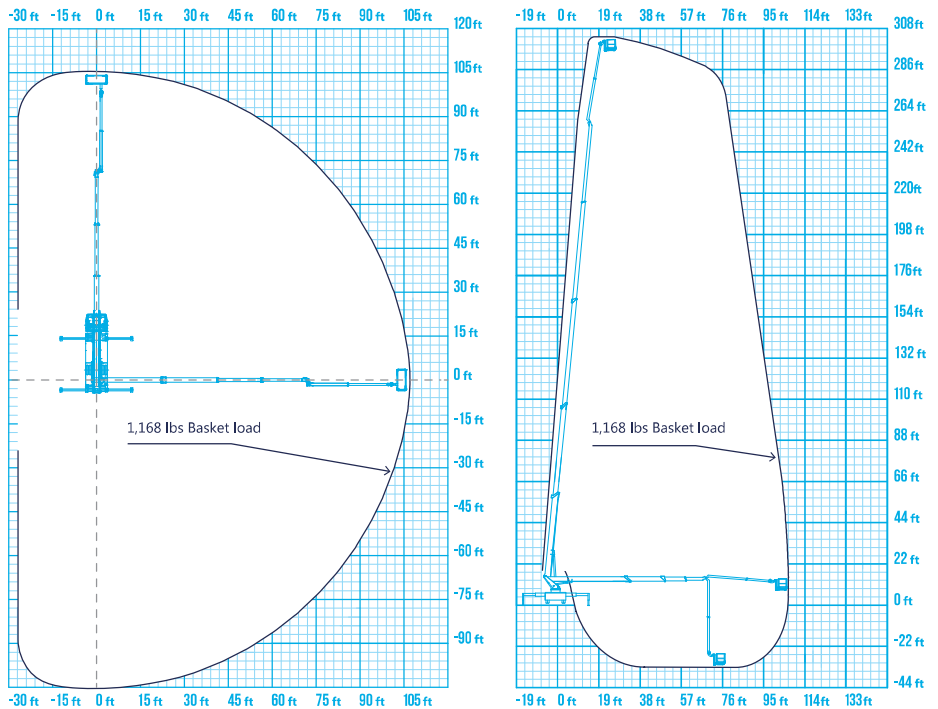
- Six (6) anchor points for safety harnesses
- Emergency controls on the ground level
- Cage ground contact safeguard
- Illumination of all controls
- Grounding equipment
- Debris-catching safety net

# TRUCK-MOUNTED BOOM LIFT

|                                       |   |
|---------------------------------------|---|
| Max. working height                   | 300' / 90 m                                   |
| Max. cage floor height                | 289' / 88 m                                   |
| Max. horizontal outreach              | 289' / 88 m                                   |
| Max. working range below ground       | 20' / 6 m                                     |
| Max. length of jib boom               | 31'6" / 9.65 m                                |
| Turntable rotation                    | 270 degrees                                   |
| Min. stabilizer spread                | 8'6" / 2.95 m (within truck width)            |
| Max. stabilizer spread                | 26' / 8 m                                     |
| Unit dimensions in transport position | 53" x 8'6" x 13'4" / 16.15 m x 2.59 m x 4.1 m |
| Gross vehicle weight                  | 110,900 lbs                                   |

## Cage

|                            |   |
|----------------------------|---|
| Max. extendable cage load  | 1,168 lbs / 530 kg                            |
| Extendable cage dimensions | 12'7" x 3'4" x 3'6" / 3.88 m x 1.05 m x 1.1 m |
| Max. heavy-duty cage load  | 1,540 lbs / 700 kg                            |
| Heavy-duty cage dimensions | 8'1" x 3'4" x 3'6" / 2.47 m x 1.05 m x 1.1 m  |
| Cage rotation              | 2 X 84 degrees                                |
| Socket in the basket       | 230V / 110V / 24V DC                          |
| Hydraulic power outlet     | 200 bar (2,900 PSI), 10 l/min (2.6 GPM)       |



BETTER EQUIPMENT

BETTER SAFETY

BETTER SERVICE

BETTER EFFICIENCY

BETTER SAVINGS

Email: [info@alphaplatforms.com](mailto:info@alphaplatforms.com)  
[www.alphaplatforms.com](http://www.alphaplatforms.com)

**CALL NOW: 855-2000-855**