



A-250

250' / 75 m

BENEFITS

- "Up and over" access
- Unique "under and up" and "up and over and back" access
- Smooth controlled motions to move close to and around glass and fragile structures
- High pressure air line, heater, A/C, halogen lights inside the cage
- Movable cage controls panel with graphic display
- Secondary controls station at a turntable
- Rain cover, sunshade, hoist, winch

SAFETY

Intelligent Safety

- Load-dependent built-in cage boom extension limits
- Redundant real-time, computer-limited extension and load limits
- Emergency lowering of the cage to the ground
- Load moment limiter
- Cage overload alarm
- Built-in wind meter

Physical Safety

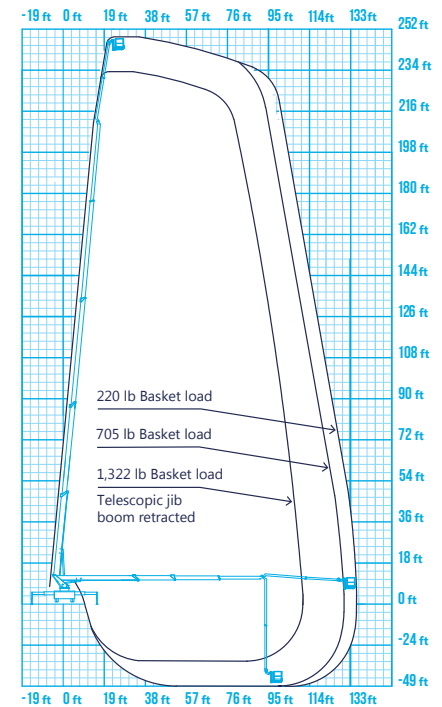
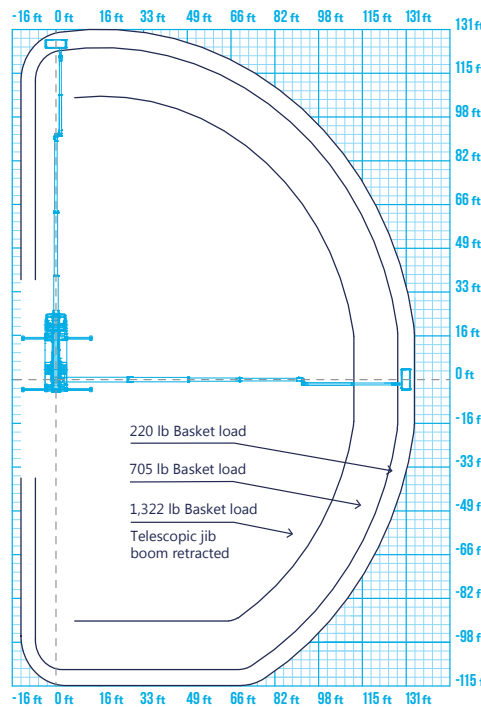
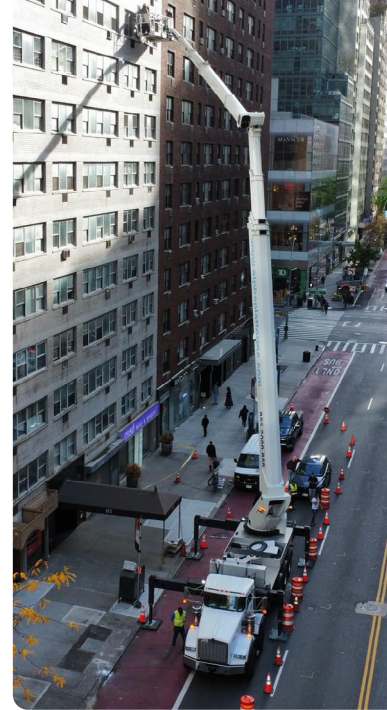
- Six (6) anchor points for safety harnesses
- Emergency controls on the ground level
- Cage ground contact safeguard
- Illumination of all controls
- Grounding equipment
- Debris-catching safety net

TRUCK-MOUNTED BOOM LIFT

Max. working height	246' / 75 m
Max. cage floor height	239'5" / 73 m
Max. horizontal outreach	134'5" / 41 m
Max. working range below ground	39' / 12 m
Max. length of jib boom	49'2" / 15 m
Turntable rotation	540 degrees
Min. stabilizer spread	8'3" / 2.54 m (within truck width)
Max. stabilizer spread	29'2" / 8.89 m
Unit dimensions in transport position	46' x 8'3" x 12'9" / 14 m x 2.51 m x 3.93 m
Gross vehicle weight	70,107 lbs

Cage

Max. extendable cage load	1,322 lbs / 600 kg
Extendable cage dimensions	12'5" x 3'4" x 3'6" / 3.81 m x 1.04 m x 1.1 m
Max. heavy-duty cage load	1,540 lbs / 700 kg
Heavy-duty cage dimensions	8'1" X 3'4" X 3'6" / 2.47 m X 1.05 m X 1.1 m
Cage rotation	2 x 200 degrees
Socket in the basket	230V / 110V / 24V DC
Hydraulic power outlet	200 bar (2,900 PSI), 10 l/min (2,6 GPM)



BETTER EQUIPMENT

BETTER SAFETY

BETTER SERVICE

BETTER EFFICIENCY

BETTER SAVINGS

Email: info@alphaplatforms.com
www.alphaplatforms.com

CALL NOW: 855-2000-855